

Generic Contrast Agents

Our portfolio is growing to serve you better. Now you have a *choice*.



[VIEW CATALOG](#)

AJNR

Neuroimaging Offers Low Yield in Children Positive for SARS-CoV-2

G. Orman, N.K. Desai, S.F. Kralik, A. Meoded, V.J. Seghers, A.V. Annapragada and T.A.G.M. Huisman

AJNR Am J Neuroradiol 2021, 42 (5) 951-954

doi: <https://doi.org/10.3174/ajnr.A7022>

<http://www.ajnr.org/content/42/5/951>

This information is current as of May 16, 2025.

Neuroimaging Offers Low Yield in Children Positive for SARS-CoV-2

 G. Orman,  N.K. Desai,  S.F. Kralik,  A. Meoded,  V.J. Seghers,  A.V. Annapragada, and  T.A.G.M. Huisman



ABSTRACT

SUMMARY: The coronavirus disease 2019 (COVID-19) pandemic caused by Severe Acute Respiratory Syndrome coronavirus disease 2 (SARS CoV-2) most commonly presents with respiratory disease, but neurologic complications are being reported. We aimed to investigate the rate of positive neuroimaging findings in children positive for SARS-CoV-2 referred for neuroimaging between March 18 and September 30, 2020. We found that 10% ($n = 2$) had acute findings. Our results may suggest that in children, neurologic involvement in COVID-19 is rare, neuroimaging has a low yield in diagnosis, and acute neuroimaging should involve careful risk-benefit analysis.

ABBREVIATIONS: COVID-19 = coronavirus disease 2019; MIS-C = multisystem inflammatory syndrome in children; SARS-CoV-2 = Severe Acute Respiratory Syndrome coronavirus disease 2

The coronavirus disease 2019 (COVID-19) pandemic is caused by Severe Acute Respiratory Syndrome coronavirus 2 (SARS CoV-2). The most common presentation of SARS-CoV-2 infection is respiratory disease, but associated neurologic complications are increasingly reported in adults.¹

A wide spectrum of neurologic symptoms has been described. Common neurologic manifestations include fatigue, headache, and smell and taste disorders.¹ In addition, the following serious neurologic complications associated with COVID-19 have been reported:² 1) cerebrovascular accidents (ischemic stroke and macro-/microhemorrhages), 2) encephalopathies, 3) infectious-/immune-mediated complications (Guillain-Barre syndrome, acute disseminated encephalomyelitis), 4) meningoencephalitis, 5) seizures, and 6) neuropsychiatric symptoms (psychosis, mood disorders).

Because COVID-19-associated neurologic manifestations or symptoms are less frequent (1.5% versus 36.4%) and usually less severe in children and, in particular, neonates, neuroimaging findings are uncommon relative to adults.³ The goal of this article was to investigate the neuroimaging findings and yield of neuroimaging in children positive for SARS-CoV-2 with suspected neurologic involvement.

MATERIALS AND METHODS

Following institutional review board approval, a master database of all patients who tested positive for SARS-CoV-2 at Texas Children's Hospital between March 18, 2020, and September 30, 2020, was assembled by the Texas Children's Hospital COVID-19 Imaging Taskforce. All imaging studies were extracted from the master database, and the neuroimaging studies were identified for this retrospective study. Data on demographics, new-onset neurologic symptoms, clinical features (comorbidities, respiratory symptoms, multisystem inflammatory syndrome in children [MIS-C]), cardiopulmonary support, intensive care unit or special isolation unit stay, immune-therapy and condition at discharge, and laboratory findings (CSF testing, blood testing, SARS-CoV-2 testing) were reviewed and extracted from the electronic medical records.

New-onset neurologic symptoms that were primary indications for neuroimaging within 1 month of testing positive for SARS-CoV-2 were classified as the following: 1) COVID-19-attributable indications (fever, seizures, status epilepticus, headache, focal neurologic examination findings, impaired consciousness);¹⁻³ and 2) other indications (motor vehicle crash, abusive head trauma, penetrating trauma, history of ventriculoperitoneal shunt, hydrocephalus, global developmental delay, sensorineural hearing loss, primary or metastatic tumor). Only children who met all of the following criteria were included in this study: 1) younger than 18 years, 2) tested positive for SARS-CoV-2 before and within 1 month of neuroimaging, and 3) had neuroimaging studies with COVID-19-attributable indications. The neuroimaging studies were re-evaluated for this study by 2 experienced pediatric neuroradiologists (S.F.K. and N.K.D. with 9 and 10 years of experience, respectively) in consensus.

Received November 16, 2020; accepted after revision December 14.

From the Edward B. Singleton Department of Radiology, Texas Children's Hospital, Houston, Texas.

Please address correspondence to Gunes Orman, MD, Texas Children's Hospital, Edward B. Singleton Department of Radiology, 6701 Fannin St, Suite 470, Houston, TX 77030; e-mail: gorman@texaschildrens.org

 Indicates open access to non-subscribers at www.ajnr.org

 Indicates article with online supplemental data.

<http://dx.doi.org/10.3174/ajnr.A7022>

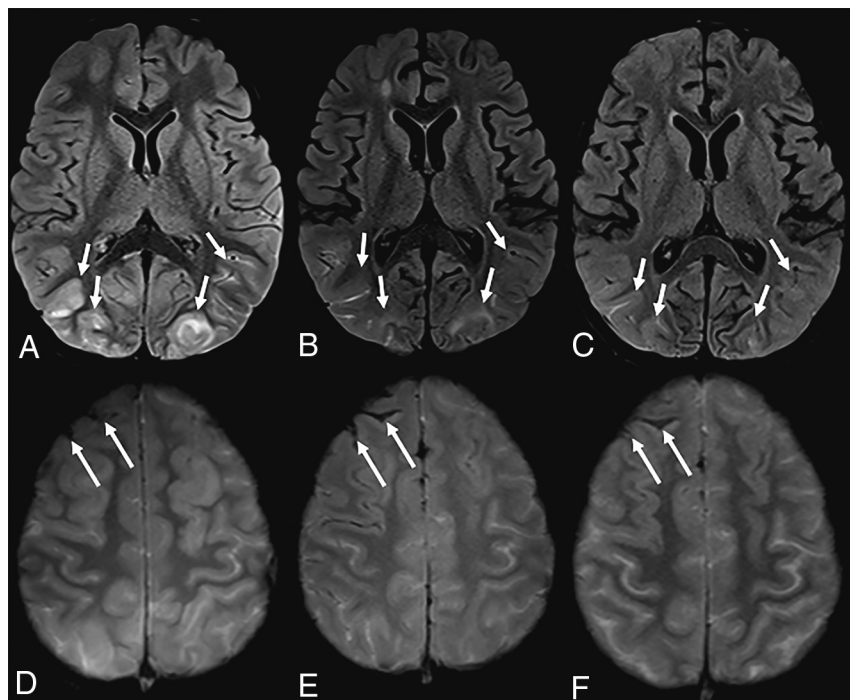


FIG 1. A 7-year-old boy with sickle cell disease who presented with dyspnea and chest pain tested positive for SARS-CoV-2. The patient was unresponsive, having desaturations and being intubated. Brain MR imaging showed T2-FLAIR hyperintensity and cortical edema in the occipital lobes, consistent with posterior reversible encephalopathy syndrome, partially resolving on subsequent imaging (A–C, arrows). Note interval evolution of right frontal subarachnoid hemorrhage (D–F, arrows).

RESULTS

The COVID-19 Imaging Taskforce identified 4351 patients, of whom 3694 were children (0–18 years of age) who tested positive for SARS-CoV-2 by polymerase chain reaction and/or serum antibodies at the Texas Children's Hospital during the study period. There were 3364 imaging studies performed on these patients, of which 217 (6.5%) were neuroimaging studies.

Forty-three neuroimaging studies (17 head CTs, 11 without contrast, 6 with contrast; 26 brain MRIs, 8 stroke protocol, 3 with/without contrast, 6 without contrast, 2 MRVs, and 7 MRAs) of 20 children (male/female, 12:8) met our inclusion criteria. All children had at least 1 neuroimaging study, 8 children had follow-up studies within a 4.47-day interval (range, 0–72 days). The average age at neuroimaging was 8.8 years (range, 0.6–17.8 years). Fifty-five percent of patients ($n = 11$) had no previous medical conditions. The remaining patients had the following pre-existent conditions: epilepsy (patient 3), sickle cell disease (patients 7 and 10), obesity (patients 11 and 13), overweight (patient 17), hemophilia C (patient 14), Sturge-Weber syndrome (patient 18), and autism (patient 20) (Online Supplemental Data).

The patients' neurologic presentation timeline was April ($n = 1$), June ($n = 6$), July ($n = 6$), August ($n = 4$), and September ($n = 3$) of 2020. Ten percent of patients ($n = 2$) had respiratory symptoms, MIS-C was noted in 10% of patients ($n = 2$), and 15% of patients ($n = 3$) had both. Mechanical ventilation was required in 2 patients, and mechanical ventilation with extracorporeal membrane oxygenation was required in 2 additional patients.

Thirty percent of patients ($n = 6$) stayed in our special isolation unit for an average of 5.3 days (range, 1–14 days), and 25% of patients ($n = 5$) stayed in the intensive care unit for an average of 11.2 days (range, 2–25 days). CSF was normal in 3 patients, but no CSF records were available for the remaining 17 patients. Blood testing showed increased inflammatory markers in 55% of patients ($n = 11$), findings were normal in 25% of patients ($n = 5$), and results were not available in 20% of patients ($n = 4$). Thirty percent of patients ($n = 6$) received immune therapy, and 10% ($n = 2$) received antiviral therapy as part of their COVID-19 management (Online Supplemental Data). Two patients (10%) had no follow-up records, and 90% of the patients ($n = 18$) were discharged from the hospital with either an improved (60%) or good (30%) condition (Online Supplemental Data).

The mean time interval between SARS-CoV-2 testing and the initial neuroimaging study was 3.9 days (range, 0–22 days). Neurologic symptoms at neuroimaging included impaired consciousness ($n = 7$), seizures ($n = 4$), status epilepticus ($n = 2$), headache ($n =$

2), focal neurologic findings on examination ($n = 2$), fever with meningeal signs on examination ($n = 1$), transient episode of aphasia ($n = 1$), and fever with headache ($n = 1$). Only 2 patients (10%) had acute findings on their initial MR imaging studies: subarachnoid hemorrhage combined with posterior reversible encephalopathy syndrome in patient 7 (Fig 1) and a right-sided hippocampal T2-hyperintense signal alteration in patient 19 (Fig 2), possibly secondary to seizure activity. Of the 5 children diagnosed with MIS-C, only 1 patient (patient 19) had acute imaging findings (right hippocampal edema).

DISCUSSION

In this limited, preliminary study, we demonstrated systemic and neurologic manifestations and neuroimaging findings in 20 children positive for SARS-CoV-2. We found that 10% of patients ($n = 2$) had acute findings on their neuroimaging studies; in 90% of patients, neuroimaging did not show acute pathology that could be attributed to the SARS-CoV-2 infection.

SARS-CoV-2 neurotropism is still poorly understood, but 4 potential mechanisms have been proposed to explain COVID-19 neurologic involvement: 1) a secondary effect of the systemic inflammatory responses triggered by the viral infection; 2) a secondary effect associated with the vascular and prothrombotic effect of the viral infection on the nervous system vasculature; 3) an immune-mediated parainfectious or postinfectious autoimmune effect in response to the viral infection; and 4) a direct neurotropic or neuroinvasive effect of SARS-CoV-2. Direct viral

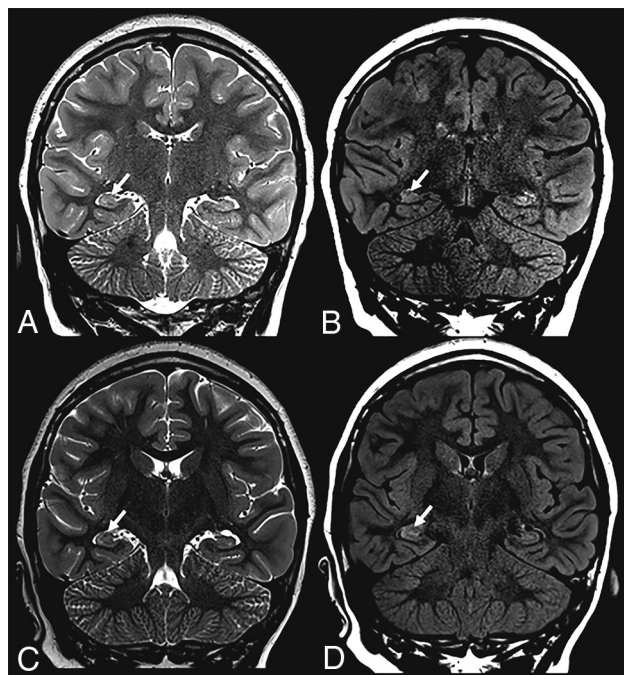


FIG 2. A previously healthy 9-year-old girl who presented with status epilepticus tested positive for SARS-CoV-2. Brain MR imaging showed subtle right hippocampal T2-FLAIR signal alteration with corresponding edema (arrows) on initial (upper row) and follow-up (lower row) imaging.

invasion confirmation would require SARS-CoV-2 sampling in CSF or brain tissue. However, SARS-CoV-2 has not been isolated from CSF or brain samples to date.³ In our patient cohort, only 3 patients had been tested for SARS-CoV-2 in the CSF; all findings were negative.

The most commonly reported neuroimaging finding in children with COVID-19 and MIS-C was reversible splenic lesion syndrome.⁴⁻⁷ Acute disseminated encephalomyelitis, bilateral thalamic cytotoxic lesions, and unilateral focal vasculopathy with acute infarction were other reported neuroimaging findings in pediatric patients with COVID-19.⁸⁻¹¹ We did not see any of these neuroimaging findings in our patient cohort. However, patient 7 with sickle cell disease had imaging findings consistent with posterior reversible encephalopathy syndrome (which was partially resolved on subsequent brain MRI, Fig 1). This patient manifested primarily with respiratory symptoms that required mechanical ventilation. Patient 19, who had no previous history, presented with a status epilepticus and showed a right hippocampus T2-hyperintense signal (Fig 2), possibly secondary to seizure activity. This patient stayed in the intensive care unit for a MIS-C diagnosis. Attributing the positive neuroimaging findings primarily to the positive SARS-CoV-2 findings in these 2 patients with complex medical histories would be highly speculative. We believe that a 10% positivity rate of acute neuroimaging findings in our patient group implies a low yield from acute neuroimaging.

A major strength of our preliminary study is the large number of children positive for SARS-CoV-2 ($n = 3694$) who presented to our hospital. Limitations of this study include the following: 1) due to the retrospective nature of the study, a discrepancy

between the number of neuroimaging studies and children because not each child needed follow-up neuroimaging, 2) single-center evaluation of patients, 3) still emerging data about the SARS-CoV-2 virus and its effects and still developing understanding of its consequences, 4) a positive test for SARS-CoV-2 in a patient with a neurologic symptom not necessarily meaning that the virus caused the symptom, and 5) acute neurologic symptoms being a possible selection bias.

CONCLUSIONS

Our results suggest that neurologic involvement of COVID-19 is rare among children. Only 10% of patients with neurologic manifestations demonstrated acute findings on their initial neuroimaging studies. In addition, a link between the observed imaging findings (posterior reversible encephalopathy syndrome and hippocampal edema) must still be confirmed. Of the 5 children with diagnosed MIS-C, only 1 child had an acute imaging finding (hippocampal edema). In summary, neuroimaging in children may have a low yield in COVID-19 diagnosis; consequently, requests for acute imaging should involve a careful risk-benefit analysis.

ACKNOWLEDGMENTS

The Texas Children's Hospital COVID-19 Imaging Taskforce (Ananth V. Annapragada, Nilesh K. Desai, R. Paul Guillermin, Thierry A.G.M. Huisman, Prakash M. Masand, Gunes Orman, Amir H. Pezeshkmeher, Marla B. Sammer, and Victor J. Seghers).

Disclosures: Ananth Annapragada—UNRELATED: Board Membership: Alzecca Biosciences; Consultancy: Alzecca Biosciences; Employment: Texas Children's Hospital; Grants/Grants Pending: National Institutes of Health, Alzecca Biosciences*; Patents (Planned, Pending or Issued): numerous United States and foreign patent applications; Royalties: University of Texas; Stock/Stock Options: Sensulin, Alzecca Biosciences; Other: Texas Children's Hospital also receives royalties from my inventions.* *Money paid to the institution.

REFERENCES

- Sharifian-Dorche M, Huot P, Osherov M, et al. Neurological complications of coronavirus infection; a comparative review and lessons learned during the COVID-19 pandemic. *J Neurol Sci* 2020;417:117085 [CrossRef Medline](#)
- Almqvist J, Granberg T, Tzortzakakis A, et al. Neurological manifestations of coronavirus infection: a systematic review. *Ann Clin Transl Neurol* 2020;7:2057–71 [CrossRef Medline](#)
- Stafstrom CE, Jantzie LL. COVID-19: neurological considerations in neonates and children. *Children (Basel)* 2020;7:133 [CrossRef Medline](#)
- Abdel-Mannan O, Eyre M, Löbel U, et al. Neurologic and radiographic findings associated with COVID-19 infection in children. *JAMA Neurol* 2020;77:1440 [CrossRef Medline](#)
- Gaur P, Dixon L, Jones B, et al. COVID-19-associated cytotoxic lesions of the corpus callosum. *AJNR Am J Neuroradiol* 2020;41:1905–07 [CrossRef Medline](#)
- Lin J, Lawson EC, Verma S, et al. Cytotoxic lesion of the corpus callosum in an adolescent with multisystem inflammatory syndrome and SARS-CoV-2 infection. *AJNR Am J Neuroradiol* 2020;41:2017–19 [CrossRef Medline](#)
- Bektaş G, Akçay N, Boydağ K, et al. Reversible splenic lesion syndrome associated with SARS-CoV-2 infection in two children. *Brain Dev* 2020 Oct 13. [Epub ahead of print] [CrossRef Medline](#)

8. de Miranda Henriques-Souza AM, de Melo A, de Aguiar Coelho Silva Madeiro B, et al. **Acute disseminated encephalomyelitis in a COVID-19 pediatric patient.** *Neuroradiology* 2020 Oct 1. [Epub ahead of print] [CrossRef Medline](#)
9. Abel D, Shen MY, Abid Z, et al. **Encephalopathy and bilateral thalamic lesions in a child with MIS-C associated with COVID-19.** *Neurology* 2020;95:745–48 [CrossRef Medline](#)
10. Mirzaee SMM, Gonçalves FG, Mohammadifard M, et al. **Focal cerebral arteriopathy in a pediatric patient with COVID-19.** *Radiology* 2020;297:E274–75 [CrossRef Medline](#)
11. Gulko E, Overby P, Ali S, et al. **Vessel wall enhancement and focal cerebral arteriopathy in a pediatric patient with acute infarct and COVID-19 infection.** *AJNR Am J Neuroradiol* 2020;41:2348–50 [CrossRef Medline](#)