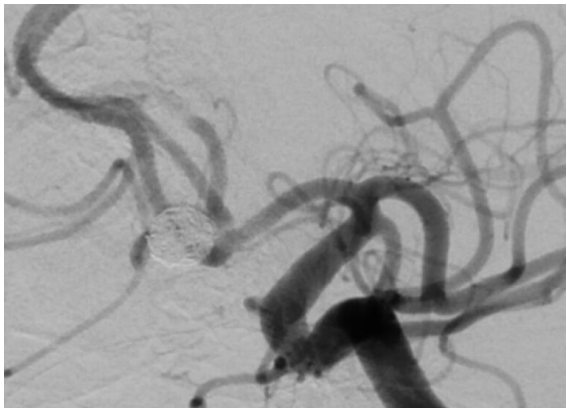
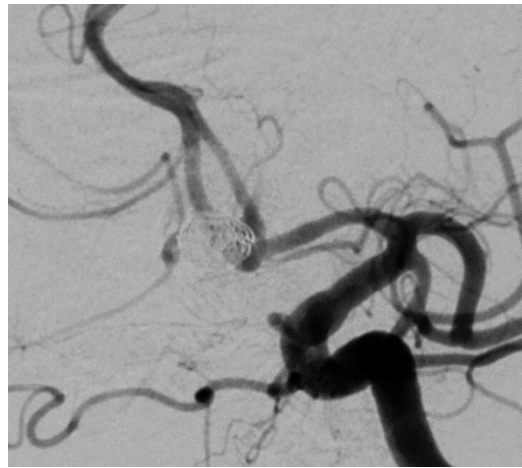
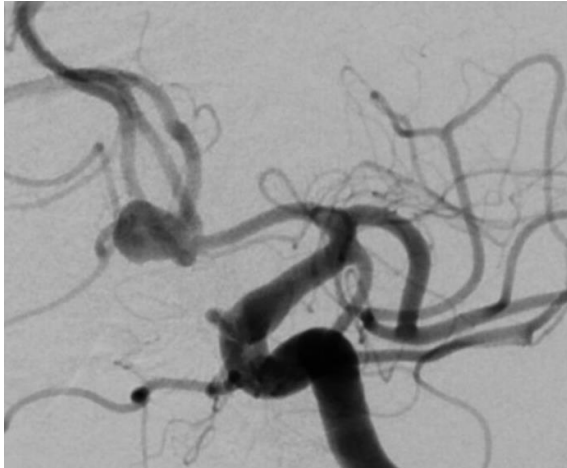


Online Supplemental Data

Initial Experiences With the Trenz Embolization Device For The Treatment of Wide-Neck Intracranial Aneurysms: A 12 Patient Case-Series

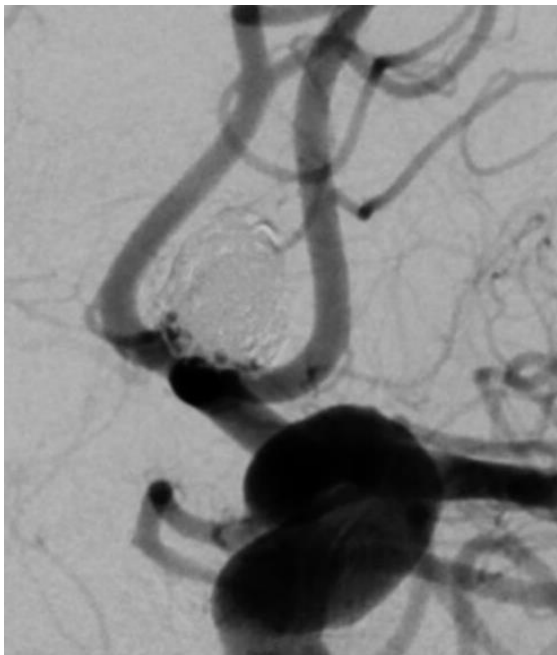
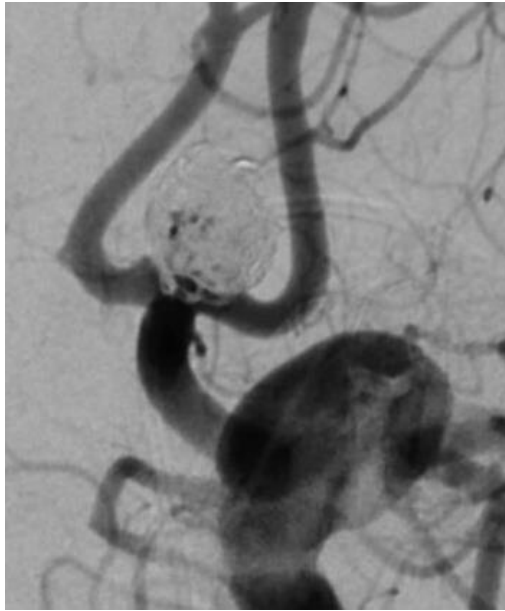
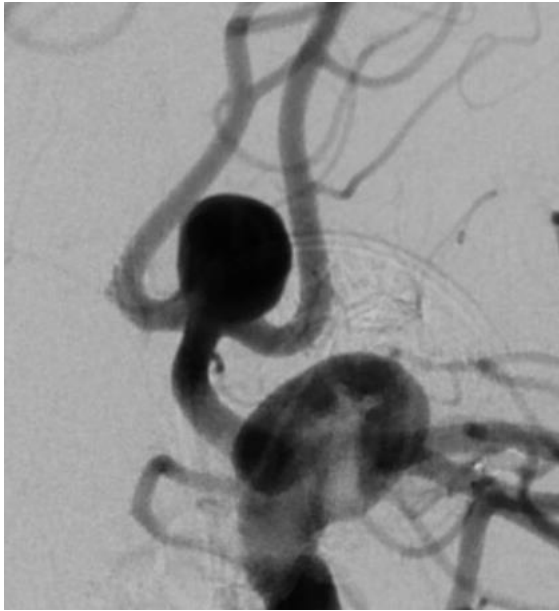
Case 1: Unruptured anterior communicating aneurysm (left top image: pre-embolization; right top image: immediate post-embolization; lower left image: control DSA image at 6,8 months).



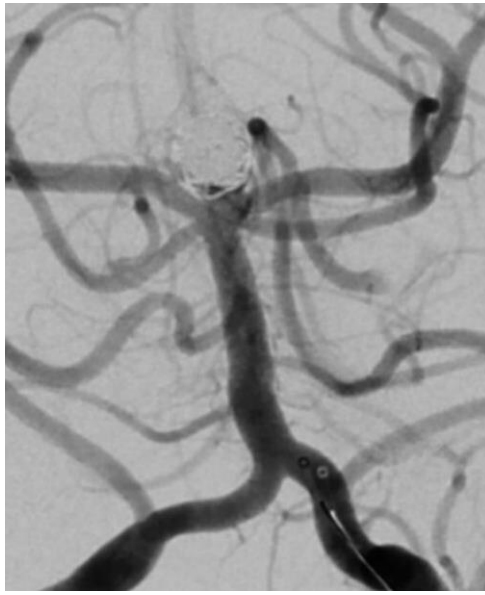
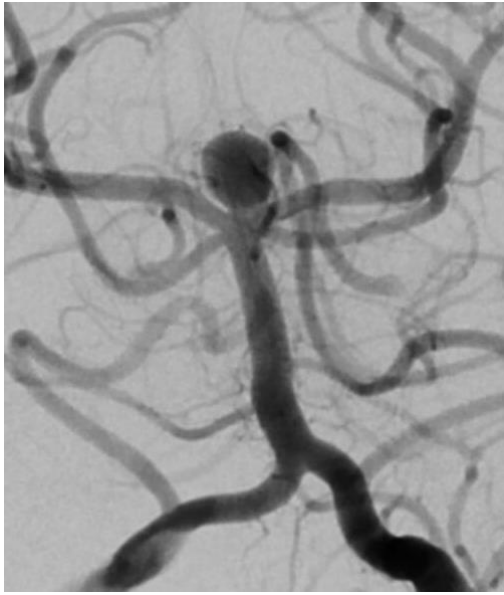
Case 2: Unruptured middle cerebral artery bifurcation aneurysm (left top image: pre-embolization; right top image: immediate post-embolization; lower left image: control DSA image at 6.1 months).



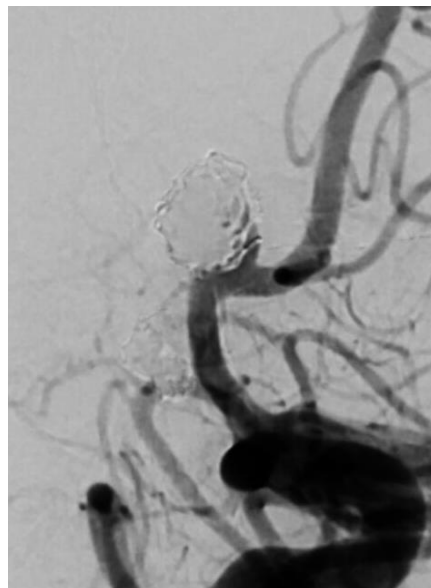
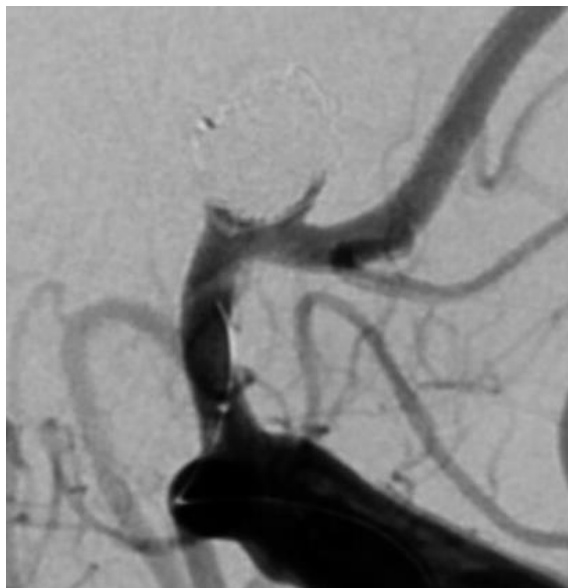
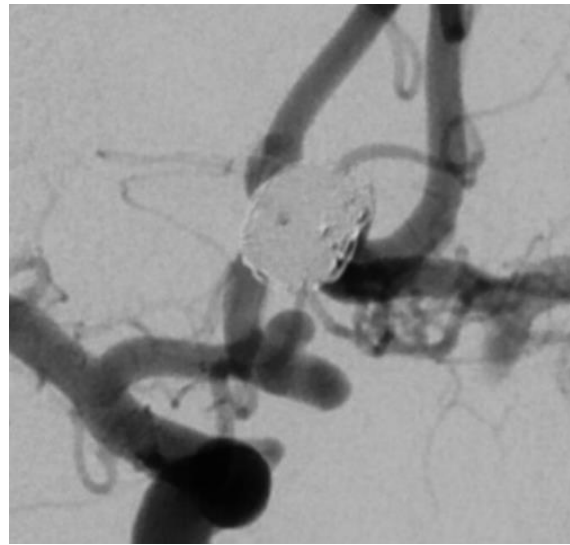
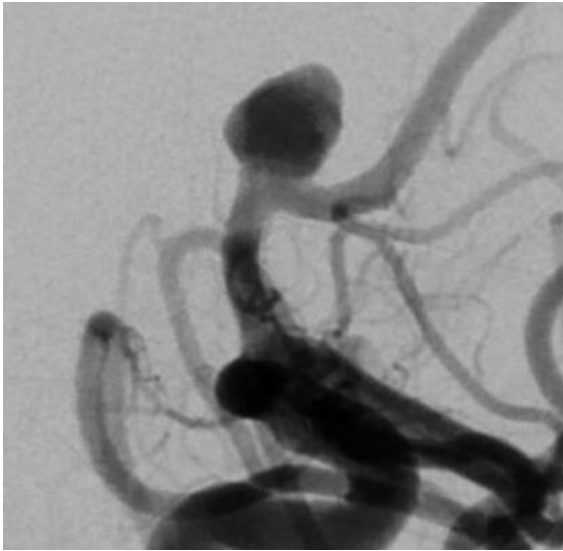
Case 3: Unruptured anterior communicating aneurysm (left top image: pre-embolization; right top image: immediate post-embolization; lower left image: control DSA image at 6.3 months).



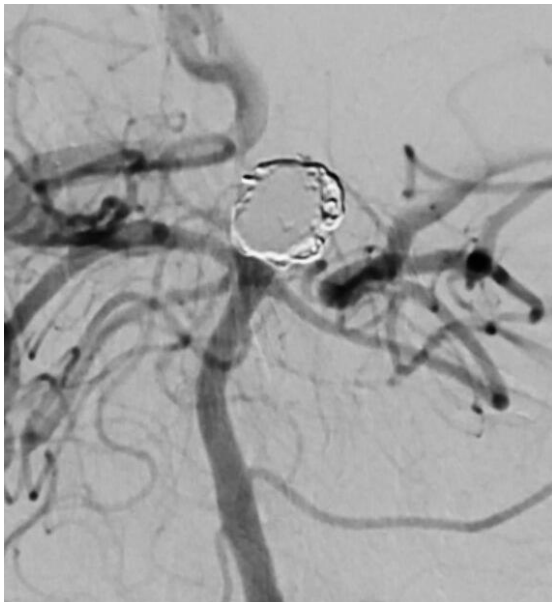
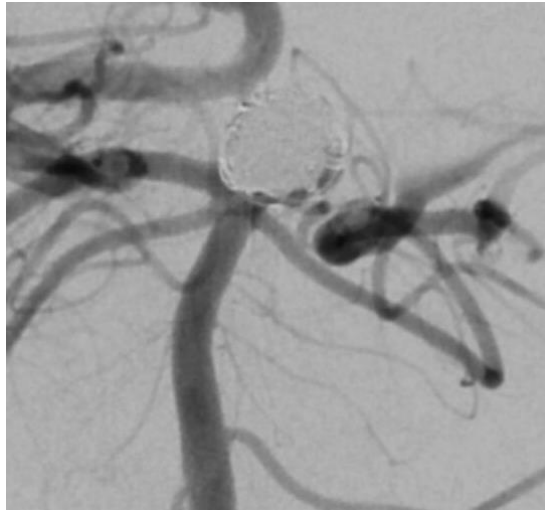
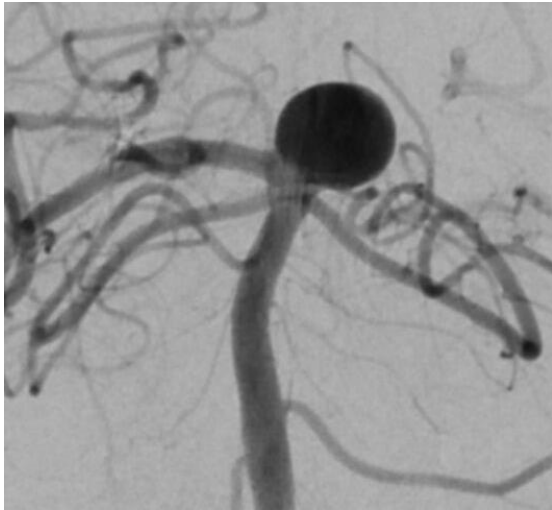
Case 4: Unruptured basilar tip aneurysm (left top image: pre-embolization; right top image: immediate post-embolization; lower left image: control DSA image at 7.0 months).



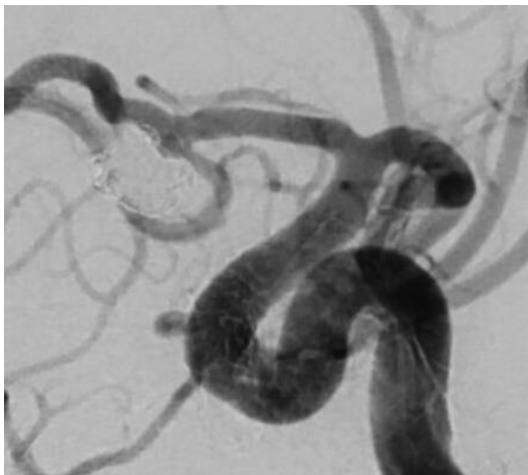
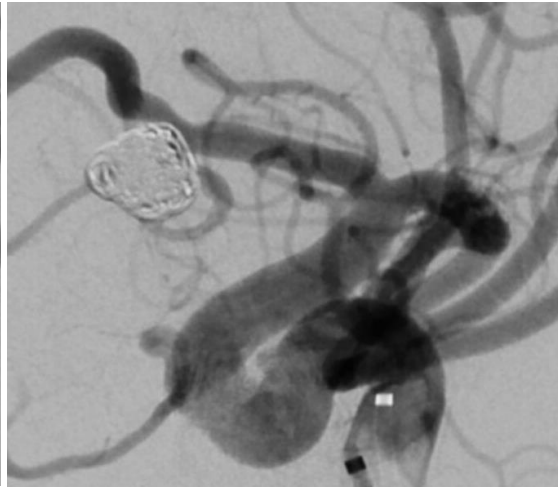
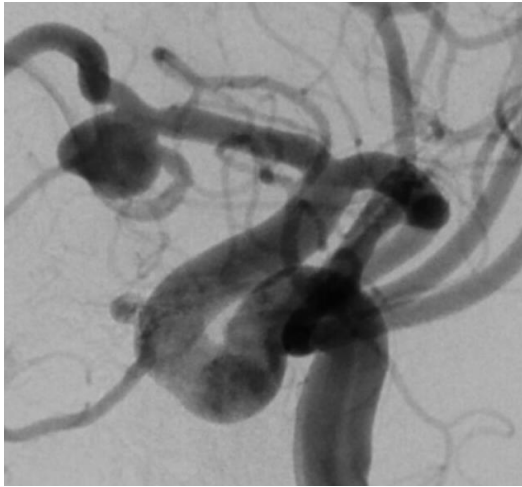
Case 5: Unruptured anterior communicating aneurysm (ACoA) (left top image: pre-embolization; right top image: immediate post-embolization; lower left image: immediate post-embolization; lower right image: control DSA image at 7.2 months)



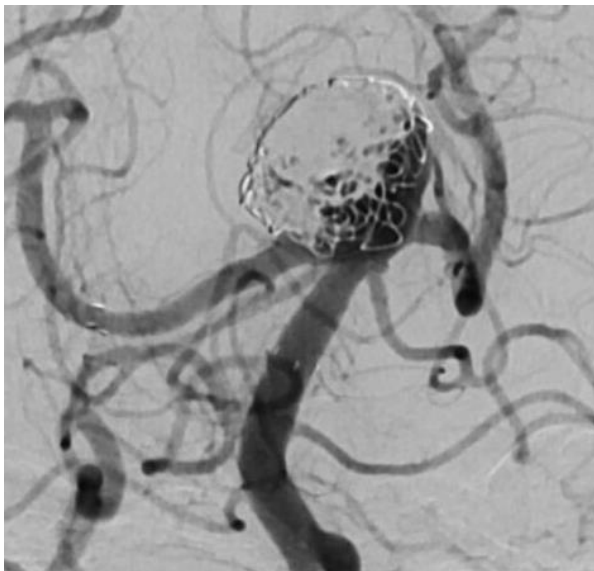
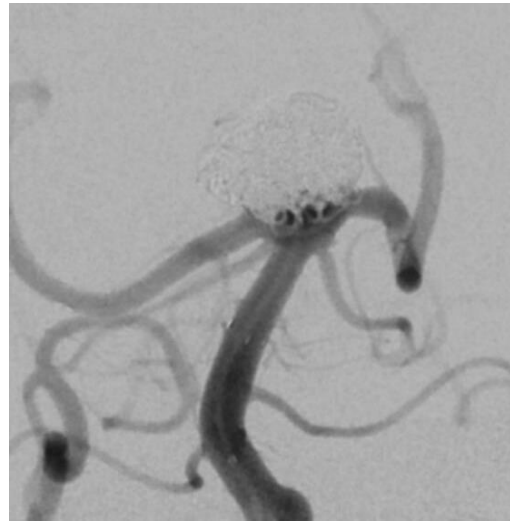
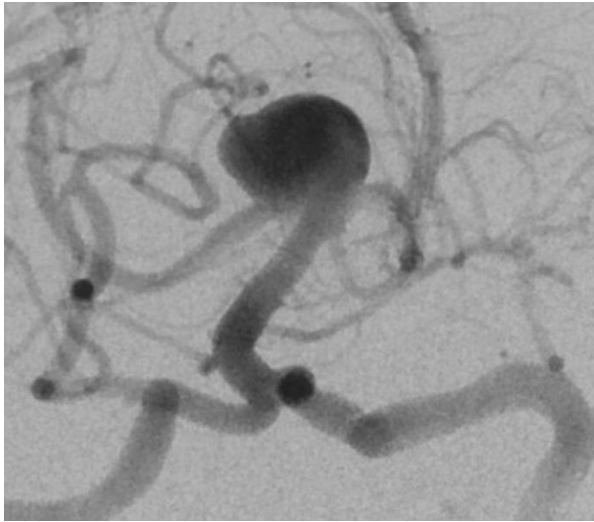
Case 6: Unruptured basilar tip aneurysm (left top image: pre-embolization; right top image: immediate post-embolization; lower left image: control DSA image at 6.3 months).



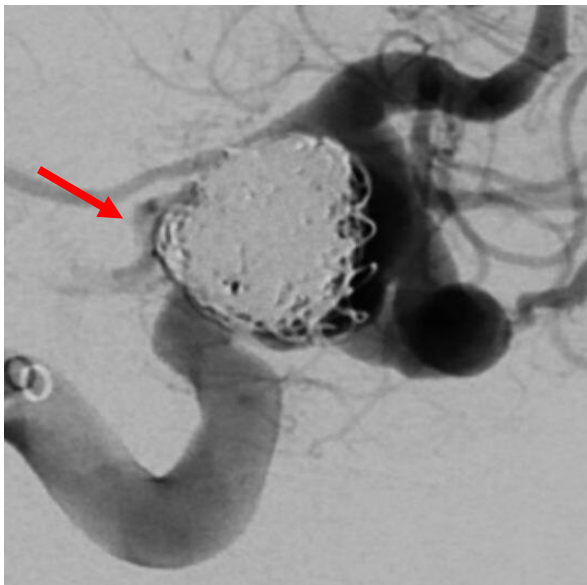
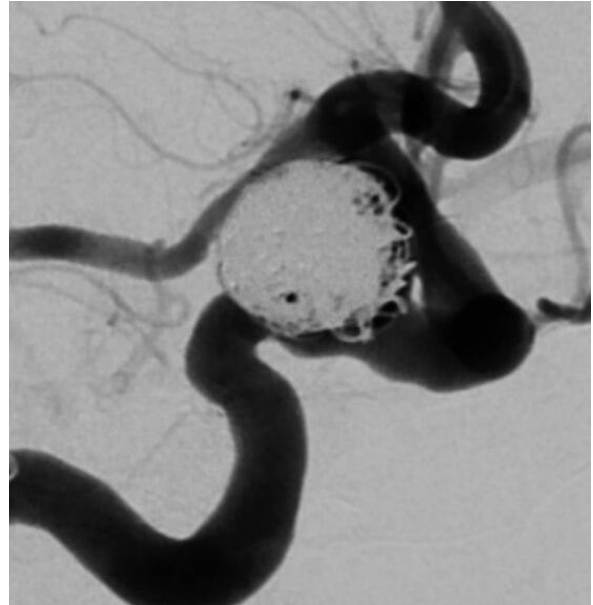
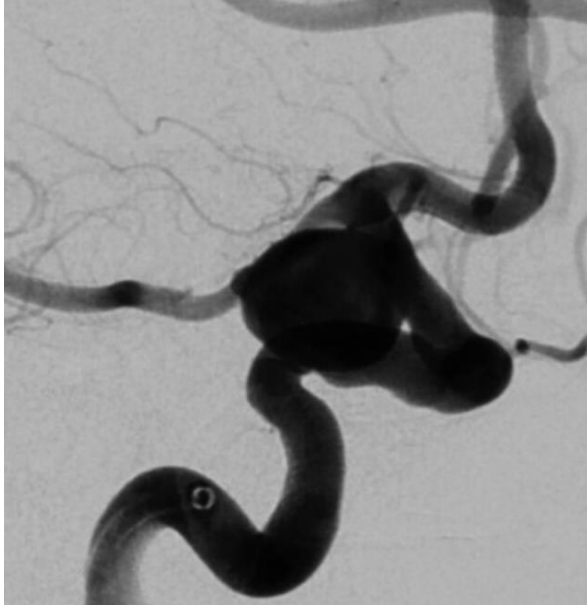
Case 7: Unruptured anterior communicating aneurysm (left top image: pre-embolization; right top image: immediate post-embolization; lower left image: control DSA image at 7.0 months).



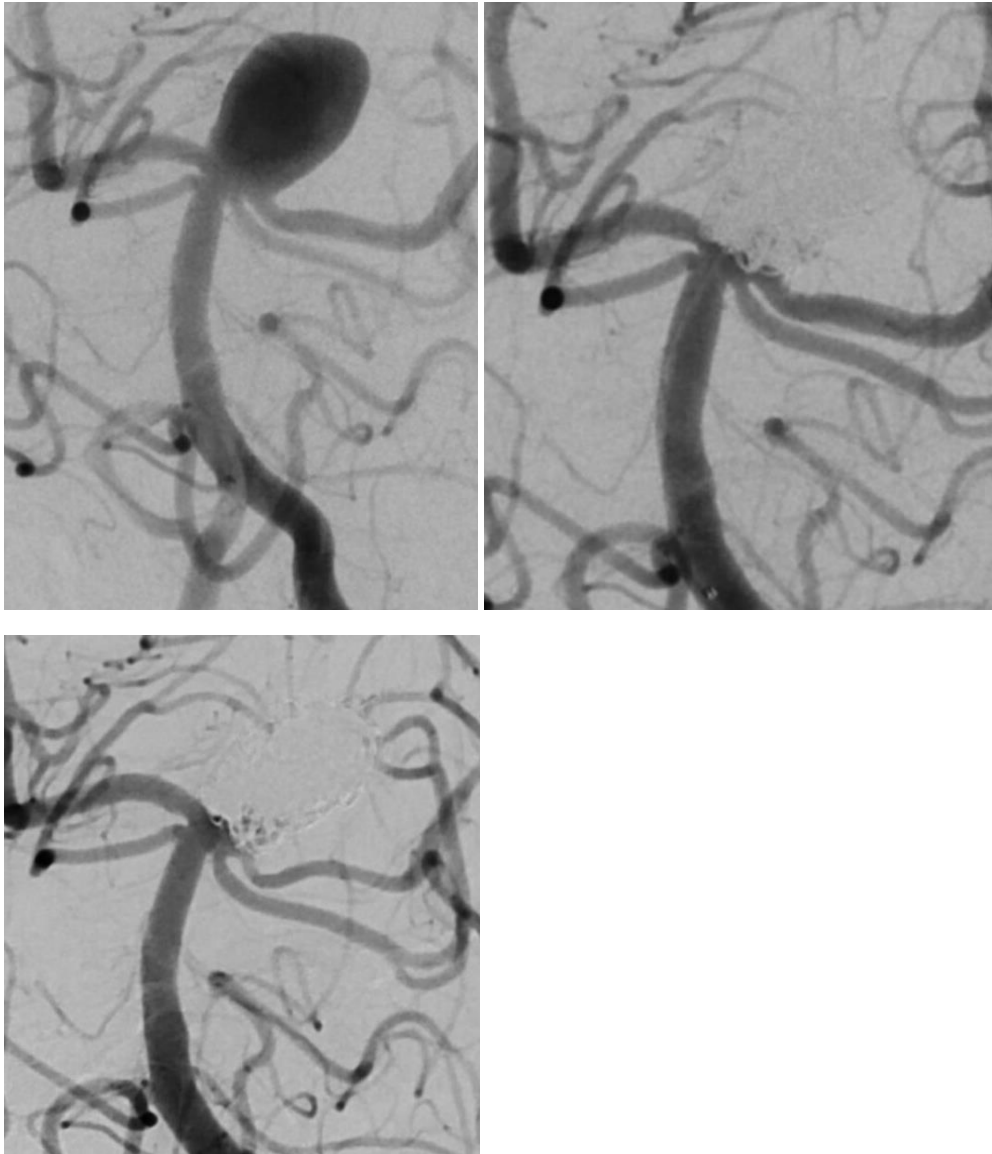
Case 8: Unruptured basilar tip aneurysm (left top image: pre-embolization; right top image: immediate post-embolization; lower left image: control DSA image at 6.8 months). The aneurysm was retreated with a by Y-stenting and additional coiling.



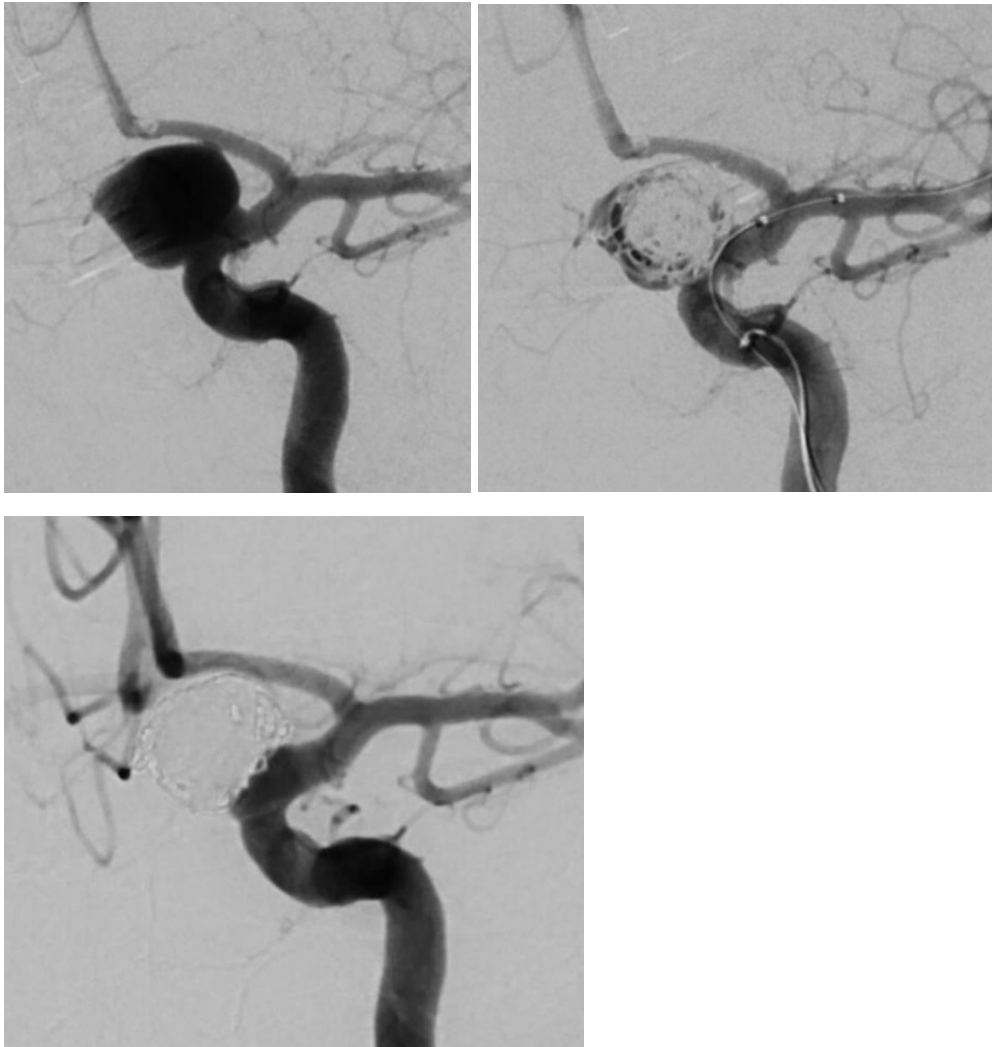
Case 9: Unruptured internal carotid artery communicating segment aneurysm (left top image: pre-embolization; right top image: immediate post-embolization; lower left image: DSA image immediately following the hemorrhage 1.6 months after the index treatment [the red arrow]). The aneurysm was retreated with three flow diverter stents, but the patient deceased after the intervention.



Case 10: Unruptured basilar tip aneurysm (left top image: pre-embolization; right top image: immediate post-embolization; lower left image: control DSA image at 6.4 months).



Case 11: Ruptured internal carotid artery communicating segment aneurysm (left top image: pre-embolization; right top image: immediate post-embolization; lower left image: control DSA image at 4.2 months).



Case 12: Ruptured internal carotid artery communicating segment aneurysm (left top image: pre-embolization; right top image: immediate post-embolization; lower left image: control DSA image at 6.6 months).

