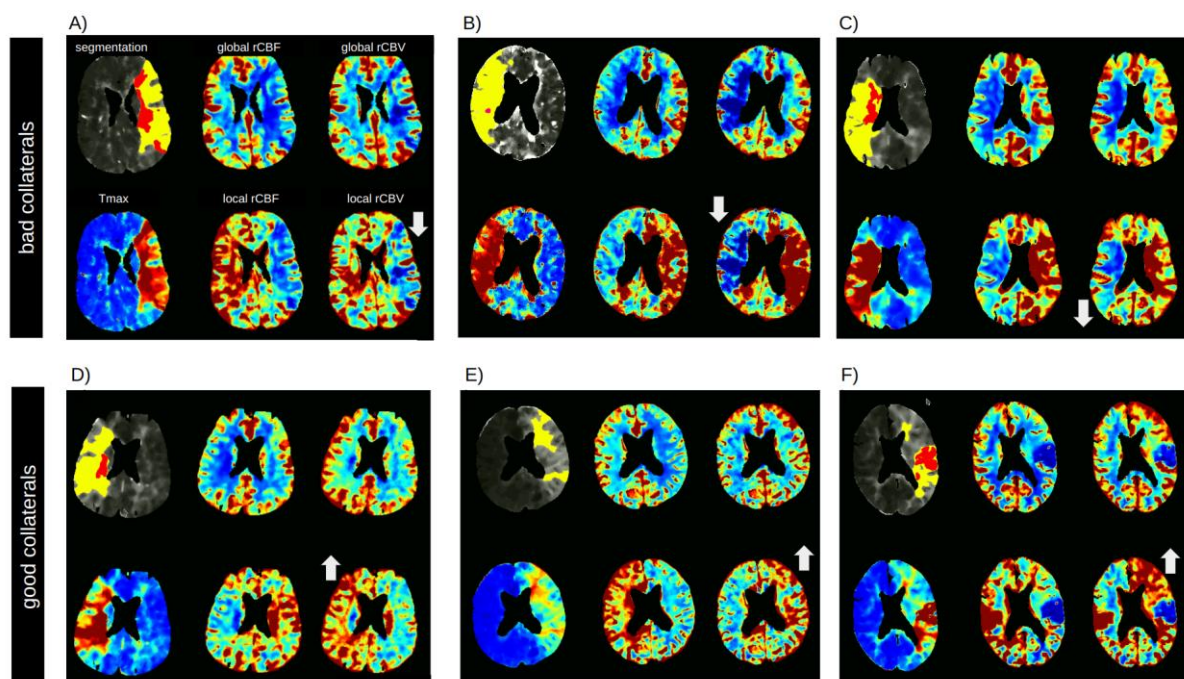
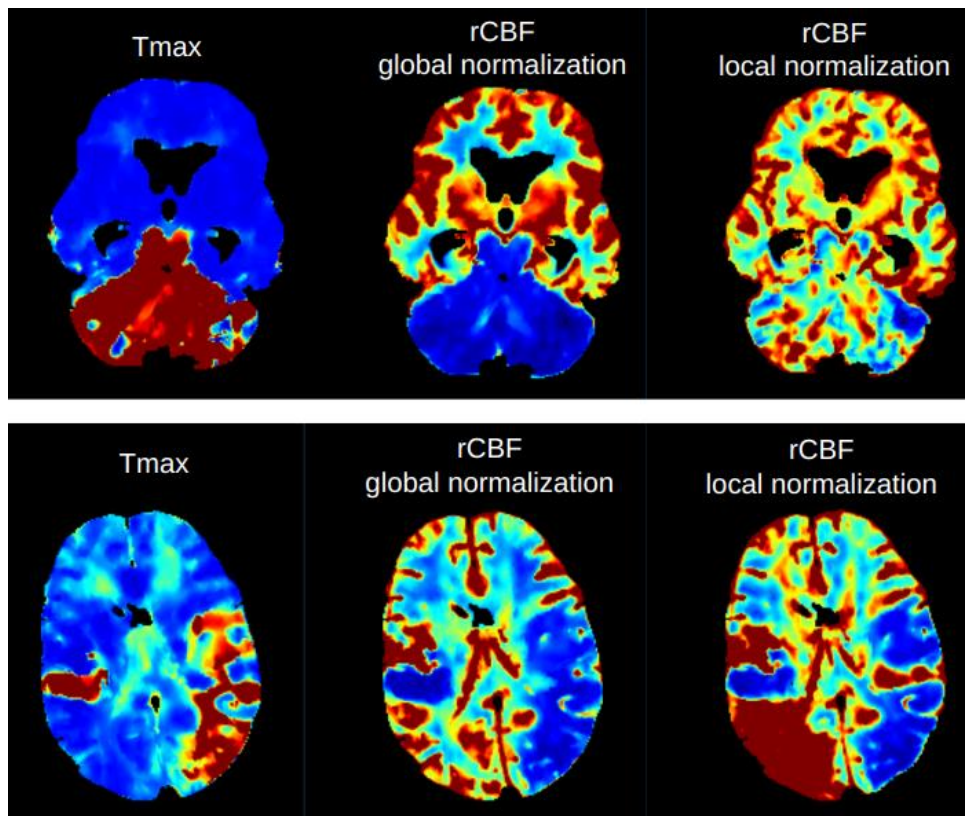


Supplementary Material



Supplementary Figure 1 The concept of local contralateral normalization can also be applied to rCBV, which can help assess the collateral status. Cases A-C show decreased rCBV in the mismatch region (indicated as down arrows) with respect to the contralateral side whereas in cases D-F rCBV is elevated (indicated as up arrows). In the maps with local normalization, the effect becomes visually more pronounced as compared to the global normalization.



Supplementary Figure 2 Another limitation is that in scenarios involving bilateral occlusions, relying solely on the locally normalized map may yield misleading results, as it could misinterpret rCBF as "normal" within the lesion. It is crucial in such instances to cross-reference with the globally normalized maps for a more comprehensive assessment.